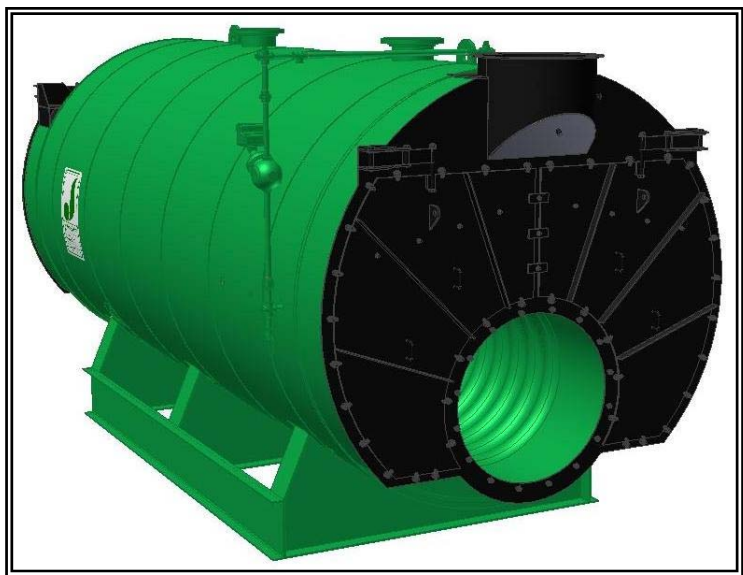


MODEL: PFTX 125-4

4-Pass Hot Water Packaged Firetube Boiler

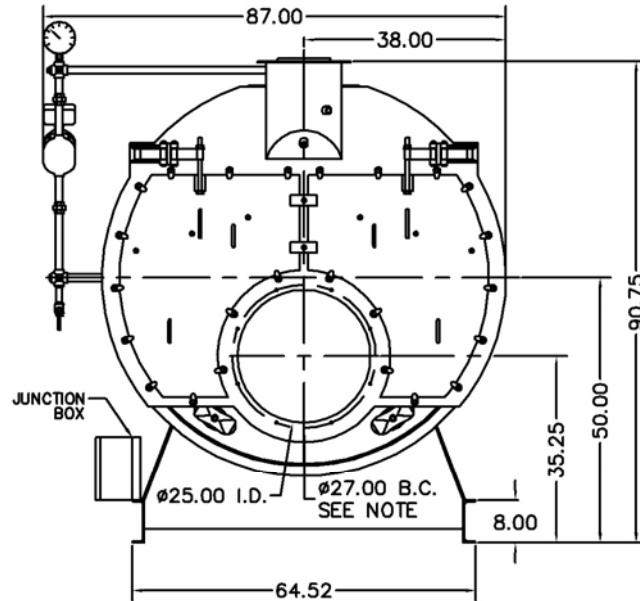


Ratings & Performance Data

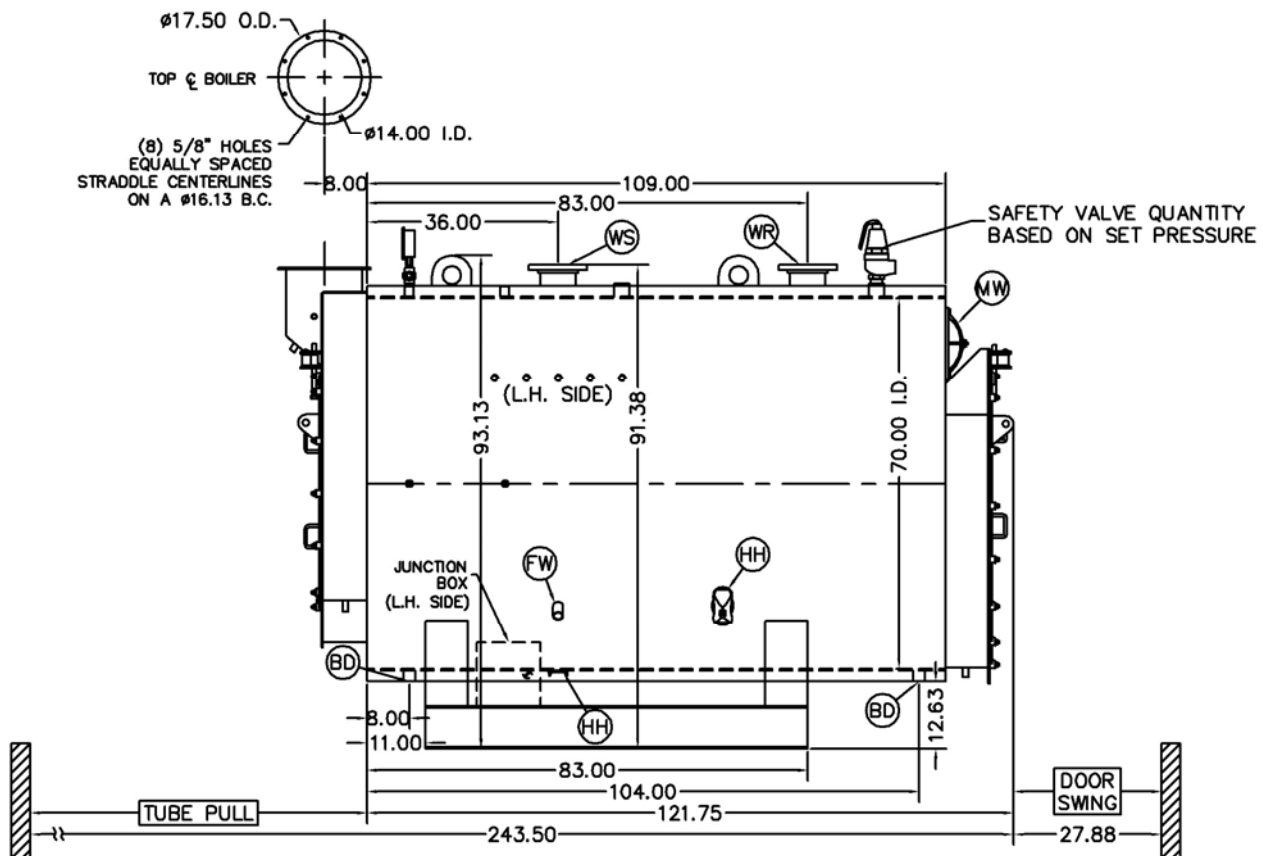
Horsepower 125		Natural Gas Flow, SCFH (1,000 Btu/ft ³)**	4,907			
Total Heating Surface, ft ²	652	Combustion Air (15% Excess), SCFM***	898			
Furnace Outside Diameter, in	30.5	Flue Gas Flow Rate, lb/hr***	4,279			
Furnace Heat Release Rate, Btu/ft ³ hr**	157,000	Stack Flue Gas Velocity, ft/min***	1,274			
Total Combustion Volume, ft ³	52.5	#2 Oil Flow, gal/hr (140,000 Btu/gal)**	33.8			
Total Heat Release Rate, Btu/ft ³ hr**	93,000	#6 Oil Flow, gal/hr (150,000 Btu/gal)**	31.2			
Water Content Flooded, gal	1,177	Flue Gas Side Pressure Drop, in. H ₂ O	2.6			
Approx. Dry Weight 30#, lb	13,000	Approx. Operating Weight 30#, lb	22,800			
Approx. Dry Weight 60#, lb	13,100	Approx. Operating Weight 60#, lb	22,900			
Approx. Dry Weight 125#, lb	13,600	Approx. Operating Weight 125#, lb	24,000			
Performance Data*						
Operating Temperature (F)	Natural Gas		#2 Oil		#6 Oil	
	Stack Temp (F)	%Eff	Stack Temp	%Eff	Stack Temp (F)	%Eff
180	258	85.8	271	88.8	266	89.8
200	277	85.3	290	88.3	286	89.3
220	296	84.8	309	87.8	305	88.8
240	314	84.3	328	87.3	325	88.4
*Based on 20°F difference in supply/return, ** Values calculated at 200°F operating temperature, ***Calculated Firing Natural Gas						

Drawings - 4-Pass Hot Water Packaged Firetube Boiler

Connection & Opening Schedule			
Conn.	Description	Type	Qty
FW	Feedwater Inlet	1.50 FNPT	2
WS	Water Supply	6.00 150#RF	1
WR	Water Return	6.00 150#RF	1
DO	Drain Outlet	1.50 FNPT	2
MW	Manway	12 X 16	1
HH	Hand Hole	4 X 6	6
Supply and return outlets ASME flanged drilling			



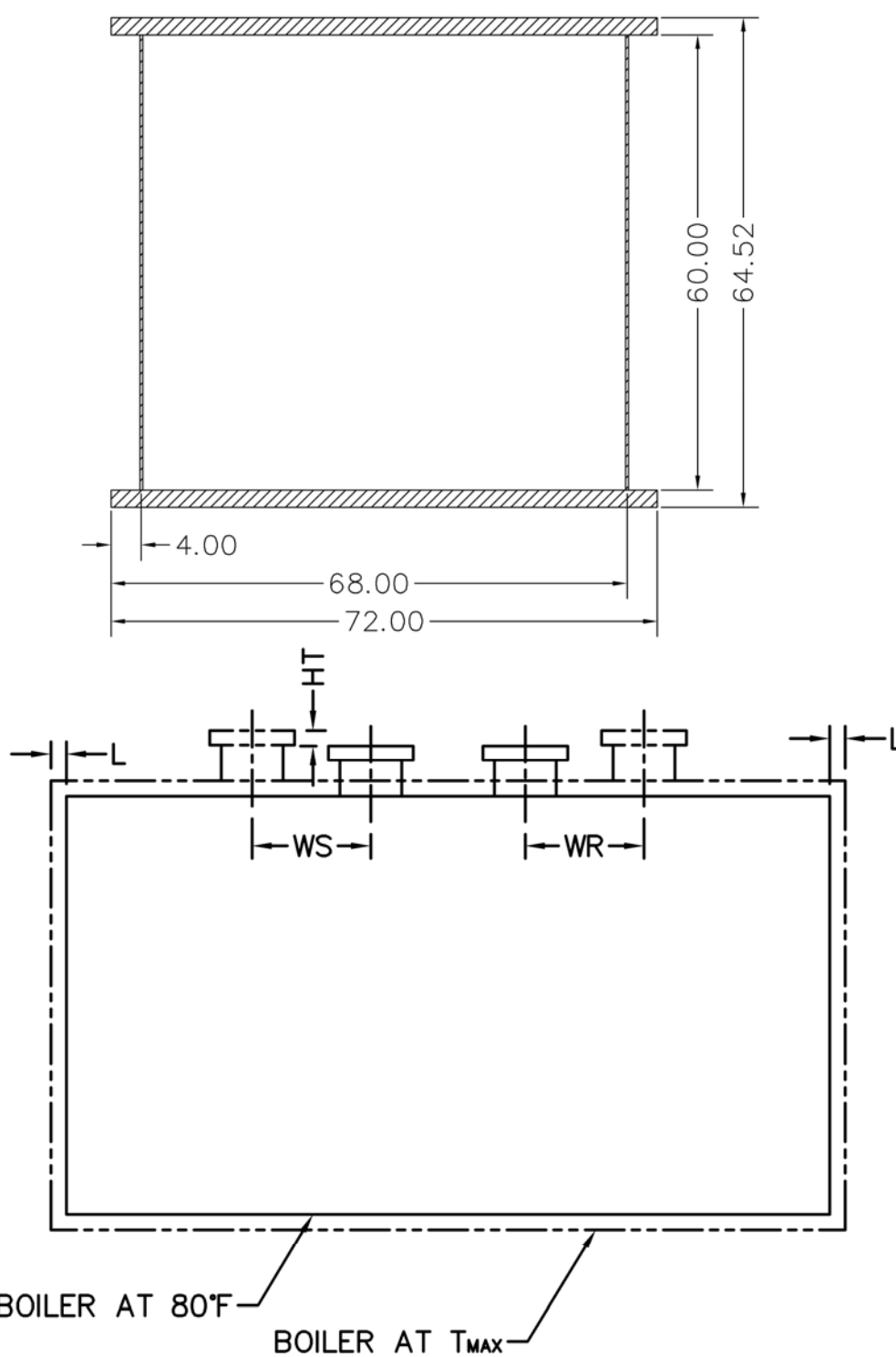
NOTE: (8) 1/2 UNC X 1.375 LONG STUDS EQUALLY SPACED STRADDLE CENTERLINES. STUDS FOR BURNER REFRACTORY (DRY OVEN) MOUNTING. REFRACTORY MUST EXTEND 12.50" MINIMUM PAST MOUNTING FLANGE.



Notes:
 30# Hot Water design shown, all dimensions given in inches.
 Fuel piping and/or optional boiler trim may increase overall width.
 Specifications subject to change to incorporate engineering advances.

MODEL: PFTX 125-4

Base Diagram

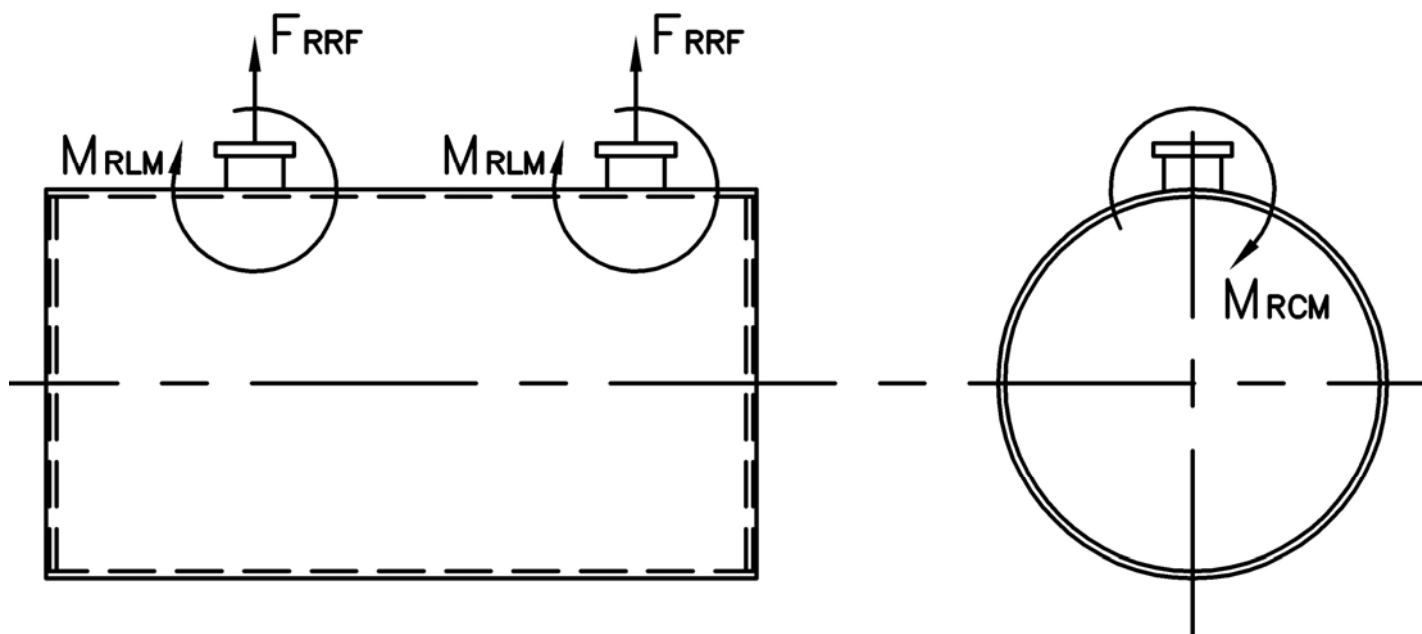


Thermal Expansion				
Metal T _{MAX} (F)	180	200	220	240
L (in)	0.033	0.039	0.046	0.052
WS (in)	0.011	0.013	0.016	0.018
WR (in)	0.017	0.021	0.024	0.027
HT (in)	0.042	0.051	0.059	0.068

MODEL: PFTX 125-4

Nozzle Loadings

Maximum Allowable Load on Outlet & Return Nozzles				
	30# Design	60# Design	125# Design	160# Design
F_{RRF} , lb	3,135	2,555	1,775	2,670
M_{RCM} , in-lb	13,420	13,420	13,420	23,150
M_{RLM} , in-lb	19,790	16,145	11,195	18,630



Distributed By:



300 Pine Street
P.O. Box 300
Ferrysburg, MI 49409-0300
Telephone: (616) 842-5050
Net: www.johnstonboiler.com

Printed Feb. 2008