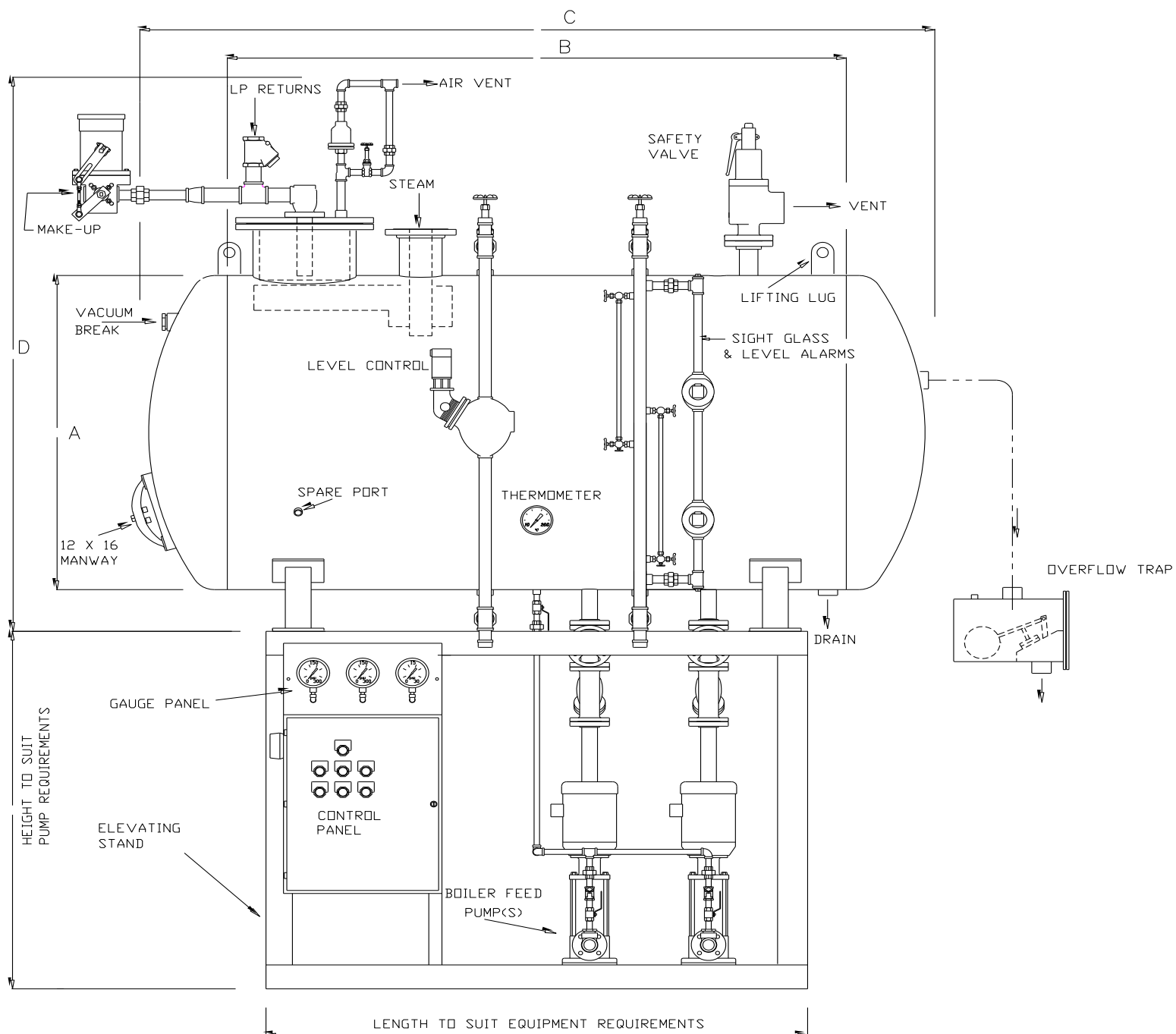




2017

Johnston Deaerator  
Model 200

Spray Type Deaerator



Model	Capacity (lbs/hr)	(A) diameter (in.)	(B) length (in.)	(C) length (in.)	(D) height (in.)	volume overflow (gal.)	storage (min.)	weight (lbs) approx w/ two pump.		
								empty	operating	full
200-001.0	10,000	36	72	91	79	252	12.6	5334	6977	8436
200-001.5	15,000	42	72	93	85	350	11.6	5981	8249	10259
200-002.0	20,000	48	72	95	91	452	11.3	7323	10350	12986
200-003.0	30,000	54	84	108	100	660	11	8926	13621	17149
200-004.0	40,000	54	119	143	101	890	11.1	11367	17647	22484
200-005.0	50,000	60	119	146	107	1211	11.2	12462	21186	27507
200-006.0	60,000	60	144	171	121	1326	11.1	14166	23690	30638
200-007.0	70,000	72	108	139	133	1709	12.2	15287	27972	33985
200-008.0	80,000	72	119	150	133	1859	11.6	16092	29870	36408
200-009.0	90,000	72	144	175	133	2251	12.5	17566	34246	41560
200-010.0	100,000	72	156	187	133	2364	11.8	19227	36674	44981

Note: 1 All vessels designed, fabricated and constructed to ASME Sec. VIII for 50 psig 450 degF and include 1/16" CA  
2 Data subject to change without notice.