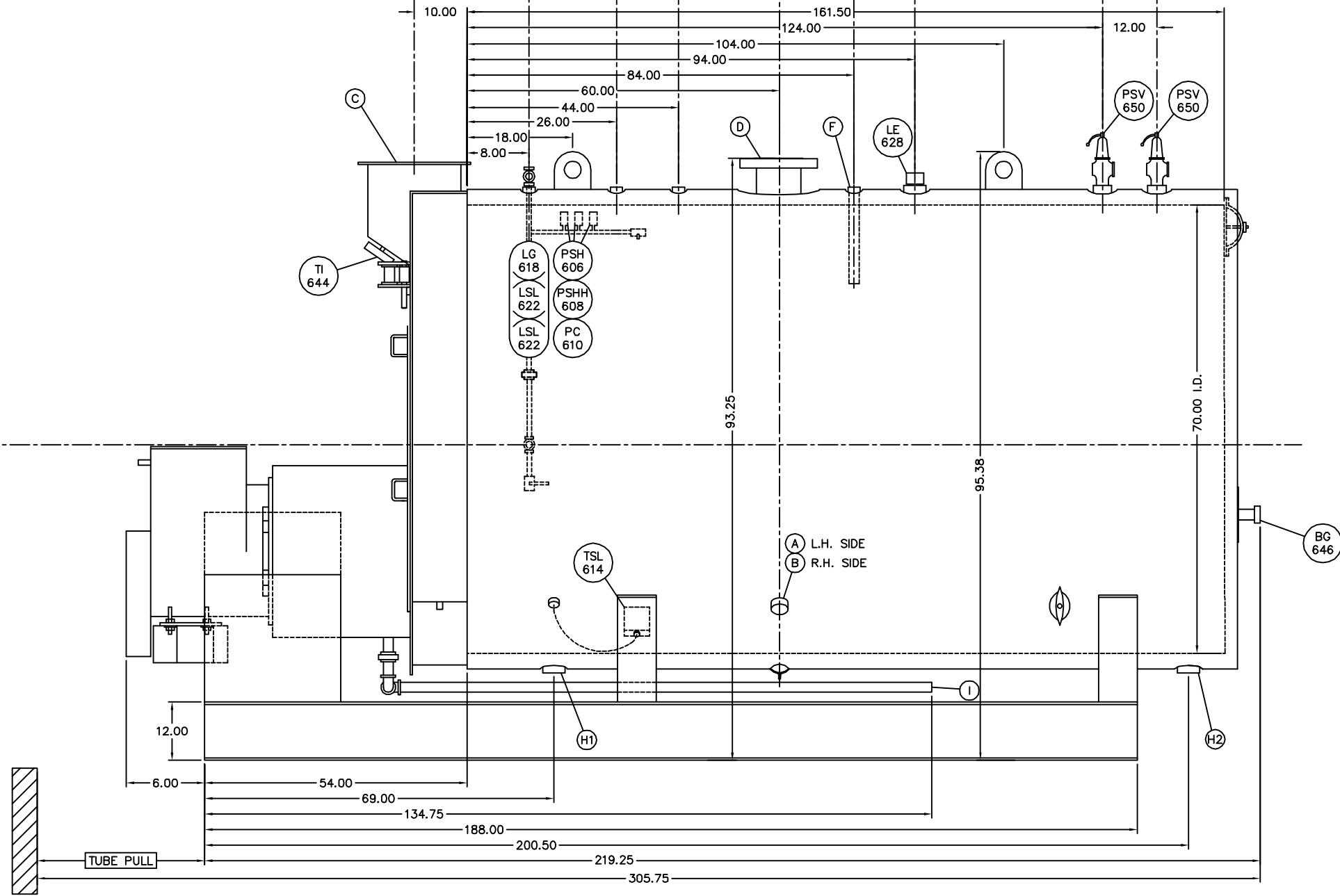
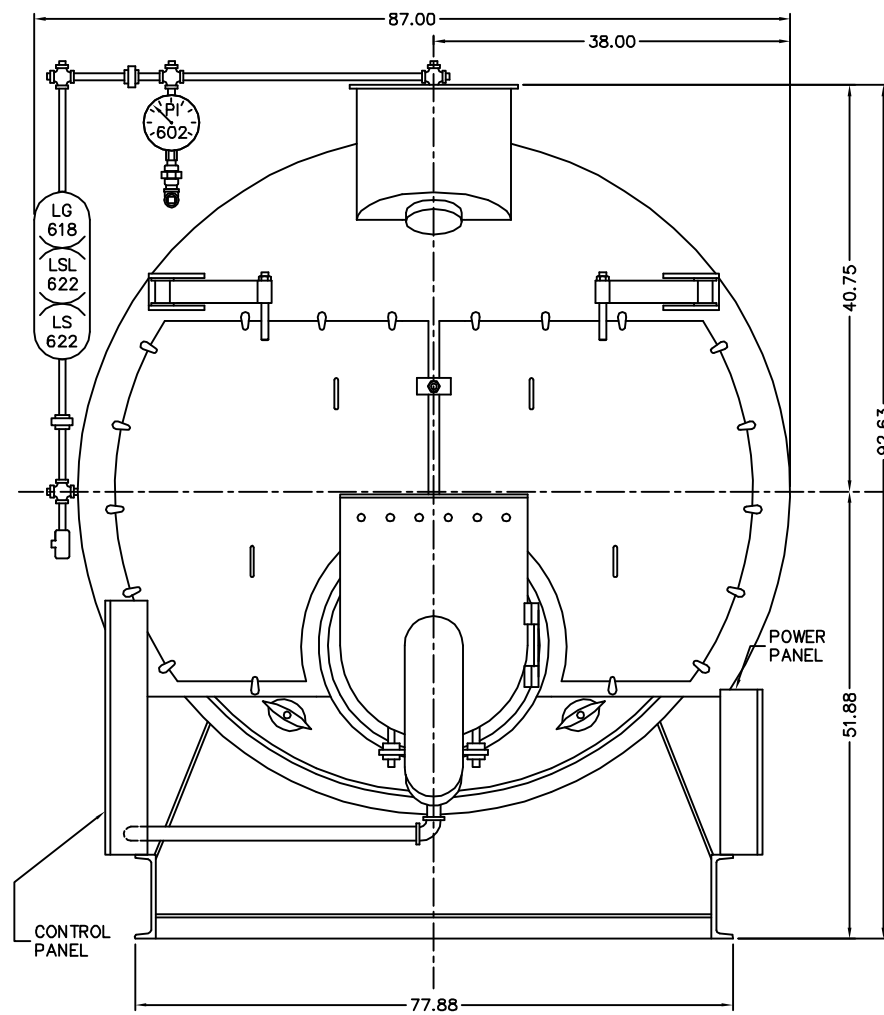
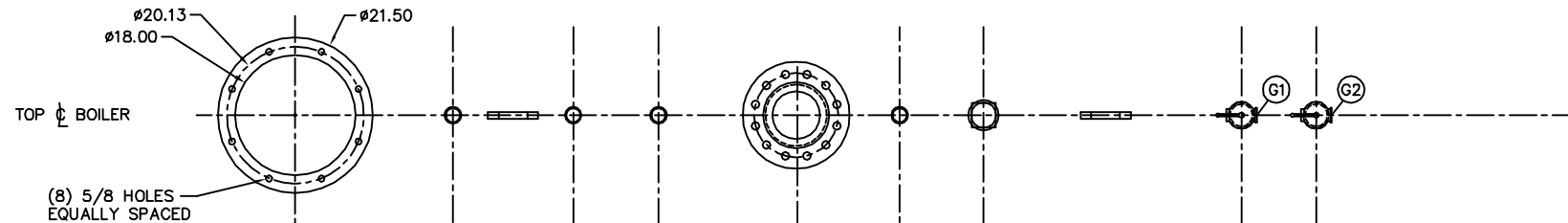


CONNECTION SCHEDULE

CONN.	DESCRIPTION	SIZE	TYPE
A	FEEDWATER INLET	1.50	FNPT
B	AUX. FEEDWATER INLET	1.50	FNPT
C	FLUE OUTLET	18.00	ID
D	MAIN STEAM OUTLET	6.00	300#RF
F	CONTINUOUS BLOWOFF OUTLET	1.00	FNPT
G	SAFETY VALVE OUTLET	2.00	FNPT
H	BLOWDOWN OUTLET	2.00	FNPT
I	MAIN GAS INLET	2.50	FNPT
J	MAIN GAS VENT VALVE OUTLET	1.50	FNPT
L	PILOT GAS VENT VALVE OUTLET	0.38	FNPT



NOTES: THIS DRAWING IS FOR DIMENSIONAL DATA ONLY. SEE PIPING & INSTRUMENT DRAWINGS FOR ACTUAL TRIM & INSTRUMENTATION PROVIDED. ALL DIMENSIONS IN INCHES UNLESS OTHERWISE NOTED. MINIMUM BOILER SIDE & REAR AISLE CLEARANCE: 36.00. BOILER COMPLETELY COVERED WITH 2" INSULATION & NONCORRODING STEEL JACKET.

DWG NO. 300B0413

REVISIONS	DATE	BY	DESCRIPTION
A	1-22-13	JRS	MIN I.D. WAS 74.00; UPDATED ALL AFFECTED DIMENSIONS; CORRECTED CONN. "B" SIZE; ADDED BURNER EXTENSION DIMENSION.

REF: DWG # 300B0413
 NOTE: THIS SYSTEM IS DESIGNED TO OPERATE AT PEAK PERFORMANCE WITH A SHORT, STRAIGHT FLUE STACK FOR EACH UNIT. OTHER CONFIGURATIONS MUST BE PROPERLY ENGINEERED TO INSURE PROPER PERFORMANCE. SEE STACK DESIGN FLYER INCLUDED WITH SUBMITTAL, OR CONTACT JBC SALES FOR A TECHNICAL CATALOG SHEET.



THIS DRAWING IS THE PROPERTY OF THE JOHNSTON BOILER COMPANY. THE DISCLOSURES CONTAINED ON THIS DRAWING ARE MADE WITH THE UNDERSTANDING THAT THEY ARE CONFIDENTIAL AND WILL NOT BE USED IN ANY WAY DETRIMENTAL TO THIS COMPANY'S INTEREST.

SCALE	NONE
DATE	3-6-03
DRAWN	JRS
CHECKED	
APPROVED	

JOHNSTON BOILER COMPANY
 FERRYSBURG, MICHIGAN 49409
 DIMENSIONAL DIAGRAM - XID
 PFXA250-2G 150S
 DWG. NO. 300B0413-01

REV A