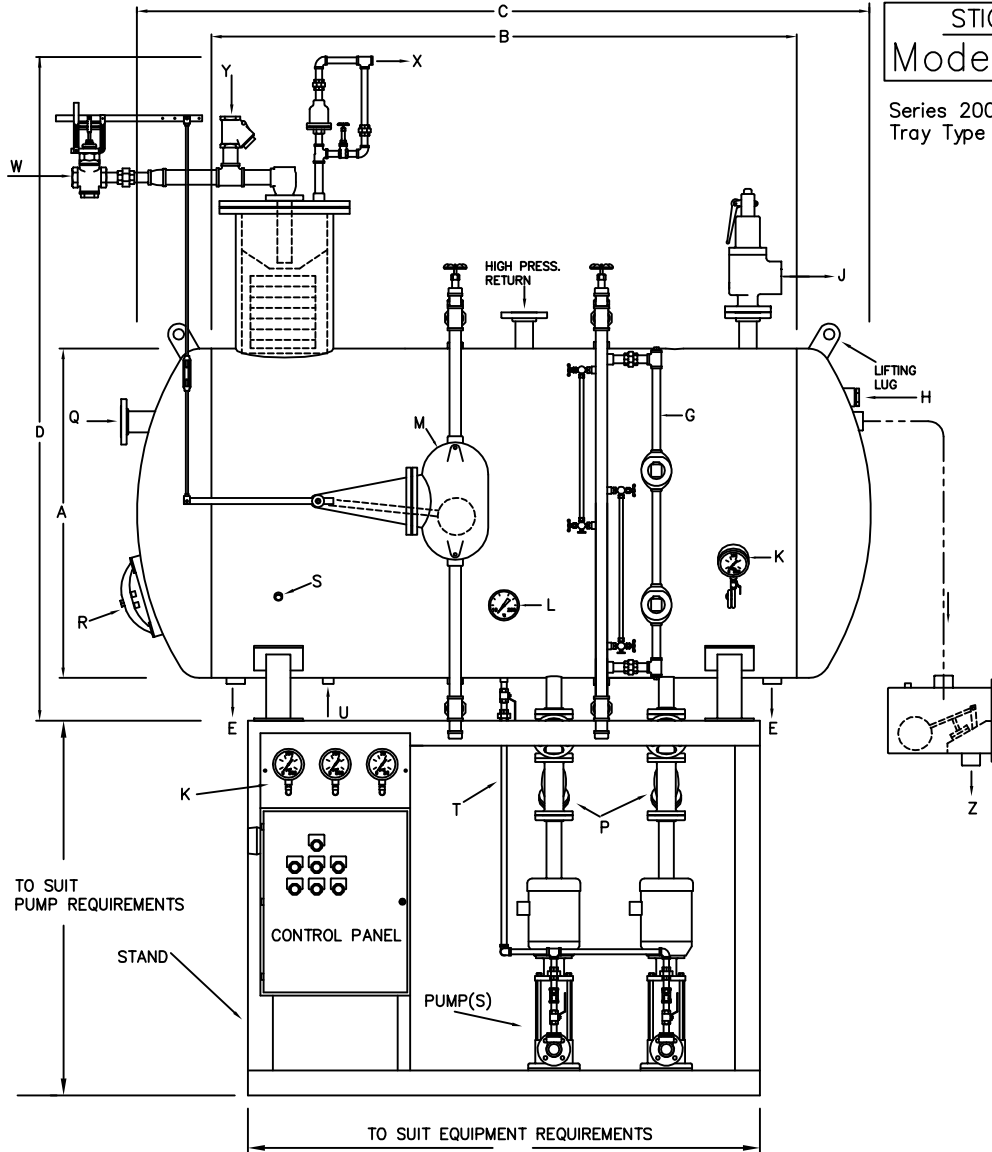


STICKLE  
Model 240

Series 200  
Tray Type Deaerators



- |                      |                      |                         |
|----------------------|----------------------|-------------------------|
| E. DRAIN             | L. TEMPERATURE GAUGE | T. PUMP RECIRC.         |
| G. HI-LO ALARM       | M. EXTERNAL FLOAT    | U. CHEMICAL FEED        |
| SIGHT GLASS          | P. PUMP SUCTION      | W. MAKE-UP WATER        |
| H. VACUUM BREAKER    | Q. STEAM INLET       | X. AUTO-MANUAL AIR VENT |
| J. SAFETY VALVE      | R. 12 X 16 MANWAY    | Y. PUMPED RETURN        |
| K. PRESSURE GAUGE(S) | S. SAMPLE PORT       | Z. OVERFLOW             |

Model No.	Capacity (lbs/hr)	A Dia. (in.)	B shell (in.)	C Overheads (in.)	D Height (in.)	Vol. Overflow (gal.)	Storage (min.)	Weight (lbs) less pump, stand, panel		
								empty	operating	full
240-001.0	10,000	36	60	79	100	234	11.7	2150	4100	4700
240-001.5	15,000	42	60	81	106	322	10.7	2300	4875	5800
240-002.0	20,000	42	84	105	106	428	10.7	2600	6025	7300
240-003.0	30,000	48	96	119	122	650	10.8	3300	8500	10250
240-004.0	40,000	48	132	155	122	864	10.8	3900	10800	13100
240-005.0	50,000	54	120	145	128	1002	10.0	4000	12000	14750
240-006.0	60,000	60	120	147	141	1247	10.4	4250	14300	17150
240-007.0	70,000	60	144	171	141	1467	10.5	4750	16500	20550
240-008.0	80,000	72	108	138	153	1648	10.3	4800	18000	22700
240-009.0	90,000	72	120	150	153	1805	10.0	5100	19600	24700
240-010.0	100,000	72	144	174	153	2118	10.6	5700	22650	28700

**Notes:**

1) All Vessels Designed, Fabricated & Stamped for 50 PSIG According to ASME Sec. VIII Div. I with 1/16" Corrosion Allowance.

2) Data Subject To Change Without Notice.

3) Unit Shown with Mechanical Type Control. Pneumatic Type Control Also Available.