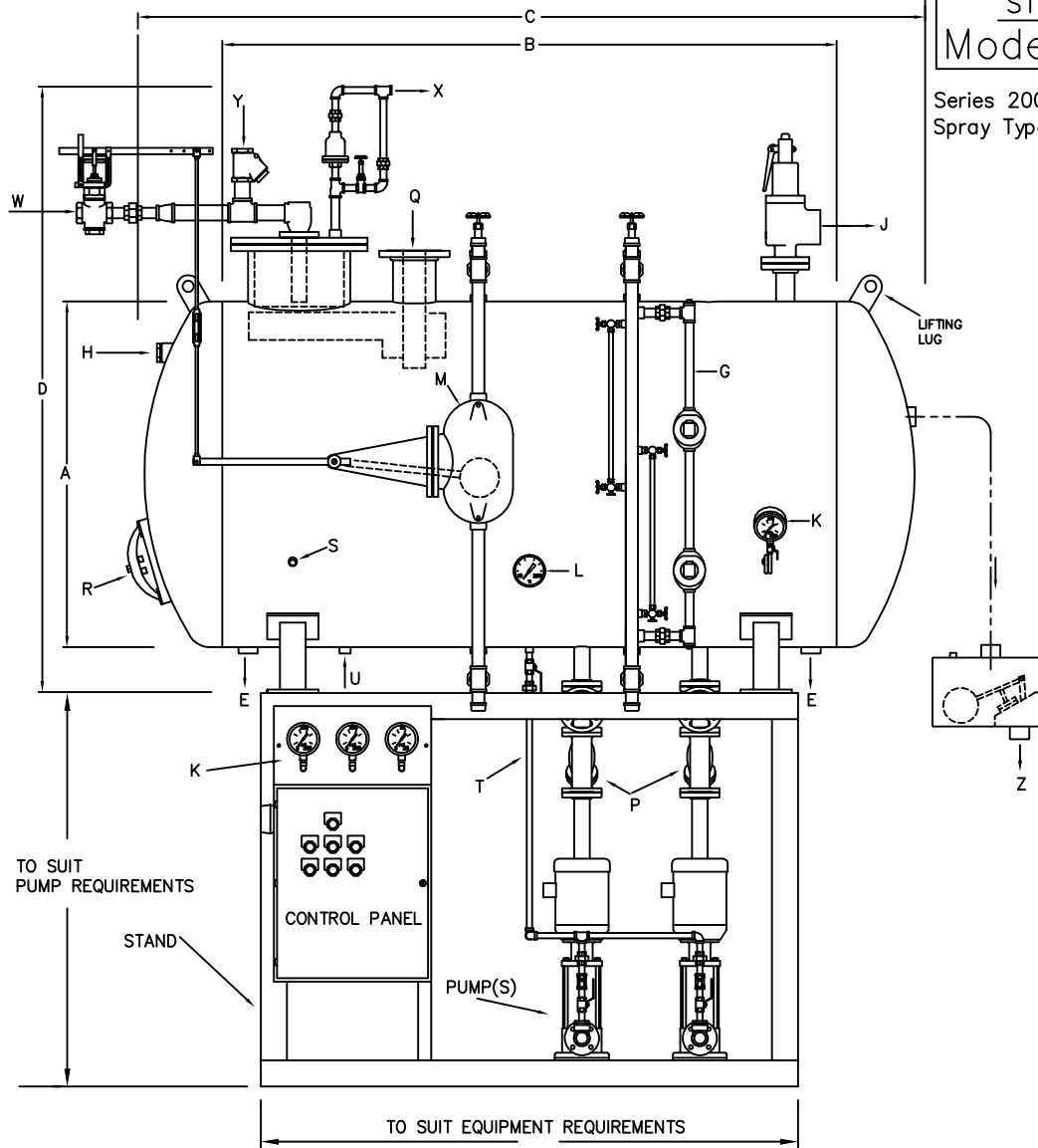


STICKLE
Model 200

Series 200
Spray Type Deaerators



- | | | |
|----------------------|----------------------|-------------------------|
| E. DRAIN | L. TEMPERATURE GAUGE | T. PUMP RECIRC. |
| G. HI-LO ALARM | M. EXTERNAL FLOAT | U. CHEMICAL FEED |
| H. VACUUM BREAKER | P. PUMP SUCTION | W. MAKE-UP WATER |
| J. SAFETY VALVE | Q. STEAM INLET | X. AUTO-MANUAL AIR VENT |
| K. PRESSURE GAUGE(S) | R. 12 X 16 MANWAY | Y. PUMPED RETURN |
| | S. SAMPLE PORT | Z. OVERFLOW |

Model No.	Capacity (lbs/hr)	A Dia. (in.)	B shell (in.)	C Overheads (in.)	D Height (in.)	Vol. Overflow (gal.)	Storage (min.)	Weight (lbs) less pump, stand, panel		
								empty	operating	full
200-001.0	10,000	36	72	91	76	372	13.1	1514	3016	4549
200-001.5	15,000	42	72	93	82	513	12.9	1796	4299	6608
200-002.0	20,000	48	72	95	88	679	11.3	1819	5156	7391
200-003.0	30,000	54	96	120	94	1105	13.0	2425	7430	12566
200-004.0	40,000	54	120	144	95	1343	11.2	3275	9949	15926
200-005.0	50,000	60	120	147	101	1681	11.3	3843	12185	20174
200-006.0	60,000	60	144	171	115	1975	11.0	3898	13908	18702
200-007.0	70,000	72	108	139	127	2242	12.4	4504	19183	24865
200-008.0	80,000	72	120	151	127	2454	11.9	5211	18558	29102
200-009.0	90,000	72	144	175	127	2877	12.4	5402	20418	31054
200-010.0	100,000	72	156	187	127	3088	11.8	5403	22087	29603

Notes:

1) All Vessels Designed, Fabricated & Stamped for 50 PSIG According to ASME Sec. VIII Div. I with 1/16" Corrosion Allowance.

2) Data Subject To Change Without Notice.

3) Unit Shown with Mechanical Type Controls. Pneumatic Type Controls Also Available.